



THIRLESTANE CASTLE EVENTS



AN EXCLUSIVE USE VENUE CLOSE TO EDINBURGH



“Thank you for considering Thirlestane Castle for your next event. This beautiful castle has played an important role in Scottish history and has also been home for our family since the 16th century.

We warmly invite you to enjoy an unforgettable experience at Thirlestane. The castle is owned by a charitable trust and every event helps to support this important building and its collections so that they can be enjoyed for many generations to come.”

Ed Maitland-Carew



Sarah & Edward Maitland-Carew



HISTORIC SCOTTISH ESTATE

Thirlestane offers privacy and seclusion yet is conveniently located 40 minutes south of Edinburgh and 50 minutes from Edinburgh International Airport.

The Castle nestles in the Scottish Borders countryside with its rose pink sandstone and majestic turrets. Surrounded by peaceful parkland with the River Leader flowing through the estate, it's an idyllic yet impressive setting for hosting your corporate event.

Luxury accommodation and several event spaces make it ideal for a variety of events.

EXCLUSIVE VENUE

Whether it is a board away day or a large outdoor incentive, we can offer complete exclusivity.

Our elegant State Rooms and more rustic spaces provide the perfect mix of atmospheres to suit different occasions. With the castle as a spectacular backdrop, the rolling parkland and extended country estate is ideally suited to team-building activities and dramatic demonstrations.

No matter your requirement, every event at Thirlestane is totally bespoke.





INCENTIVES & TEAM BUILDING

Inspire your team in splendid surroundings. Make the most of the majestic 16th century building and extensive parkland for your incentive or team-building day.

Choose from a range of activities from our award-winning providers including a Highland Games, rifle shooting, and tug o' war. Other activities on offer include a jousting performance, clay pigeon shooting, falconry displays, archery, and whisky tasting.

We have welcomed some of the largest incentive events held in Scotland. This means you can relax knowing that we will help you create your perfect itinerary.

We are always open to new ideas, so you are also welcome to bring your own activities on site.



PRIVATE DINING

Entertain your guests in one of our state rooms. Dine in elegance in the drawing room or select the portrait-lined dining room for a dramatic setting.

If you want to keep it casual, enjoy a relaxed lunch in the Victorian Kitchen with its original 19th century range oven or arrange a laid back BBQ in the cobbled courtyard or atmospheric Vaulted Cellar.

Here at Thirlestane Castle we only work with the finest caterers to ensure the food tastes as spectacular as the surroundings look. Our carefully selected caterers use the freshest, local produce and are always delighted to create a bespoke menu just for you.

For larger events, create your own dining experience inside a marquee overlooking the castle in the Gardens or on the Front Lawn.



PRODUCT LAUNCHES & PHOTOSHOOTS

Launch your new product on the sweeping front lawn or stunning castle facade.

Our historic castle provides a magical backdrop to film, showcase or create an experience around your new product.

For a more intimate setting, the Vaulted Cellar can provide a rustic backdrop complete with a cosy woodburning stove.

Alternatively, the Castle's State Rooms provide an impressive setting with their ornate plasterwork ceilings and rich colour palette.







MEETINGS & CONFERENCES

Bring your board away day, meeting, or conference to Thirlestane Castle where you will find both dramatic, inspiring spaces and smaller, more reflective areas.

The State Rooms provide large, flexible spaces where you can arrange the layout to suit your event. You will be immersed among one of the largest collections of family portraits in the country and some of the finest plasterwork ceilings in Europe.

Break-out spaces for workshops, coffee breaks or lunch are situated within the castle. Services available include free WIFI. Audio-visual equipment can be provided on request.



EXPERIENCES

Whether you are looking to treat your team or impress your clients, our dedicated team can organise some showstopping experiences to enjoy during your time at Thirlestane.

Arrive in style with a helicopter landing area available, or alternatively we can recommend some luxury transport to bring your guests to the Castle. A piper's welcome is always a wonderful way to kick start the event in true Scottish style.

From falconry displays and clay pigeon shooting to whisky tastings and firework finales, our team will create unforgettable moments.





ROLEX



CASTLE TOURS

Bring the history of the castle to life with a private guided tour as part of your itinerary.

A member of the Maitland family can welcome your guests and provide a personal insight into the pivotal role the castle has played in Scottish history.

Explore areas of the Castle that are not open to the general public and hear what it was like to grow up inside a castle.

Delve a little deeper into topics such as Art and Architecture or Military Connections on a specialist tour. Led by our experienced guides, small groups of guests are shown the extensive collection of art, artefacts and antiques as they discover the Castle's 400 year history.





LUXURY ACCOMMODATION

Extend your stay in one of the Castle's eight bedrooms. Decorated in a classic but contemporary style with items from the castle collections including portraits and furniture, each room has exceptional views over the parkland.

Relax and recharge away from other delegates in your suite complete with its own private sitting room, work area and kitchen.

All bedrooms are ensuite and have either a king-sized or super king-sized bed, some with the possibility to be set up as twin rooms.

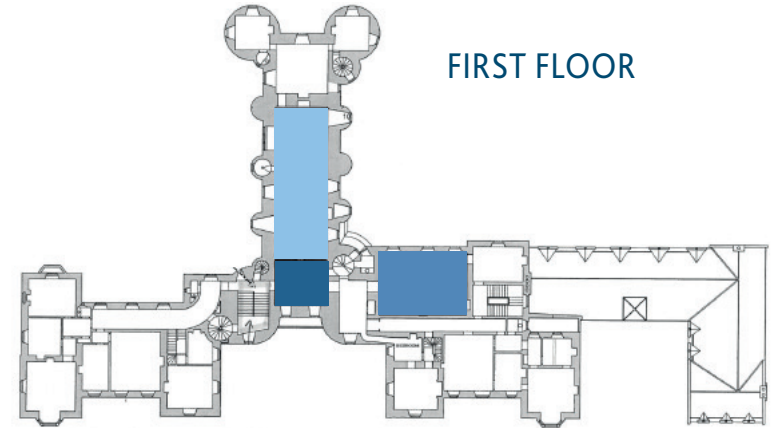
Additional accommodation is available in our Woodland Lodges, located on the Lauderdale Estate.



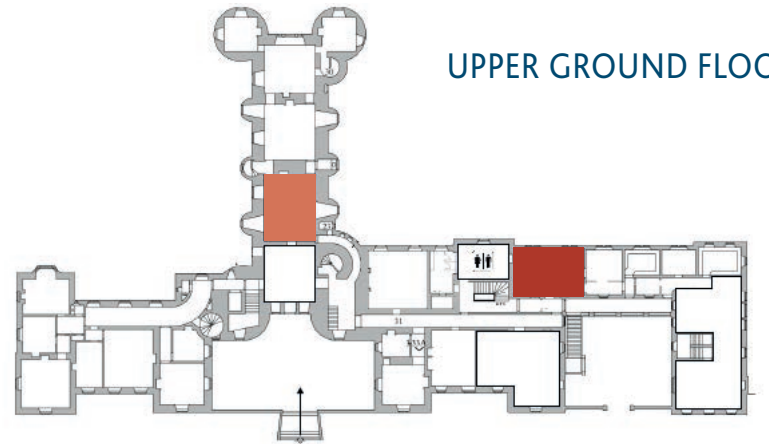
CAPACITIES

We offer a number of flexible spaces suitable for a variety of functions.
We will work with you to select the best space for your event
and design the layout of each room.

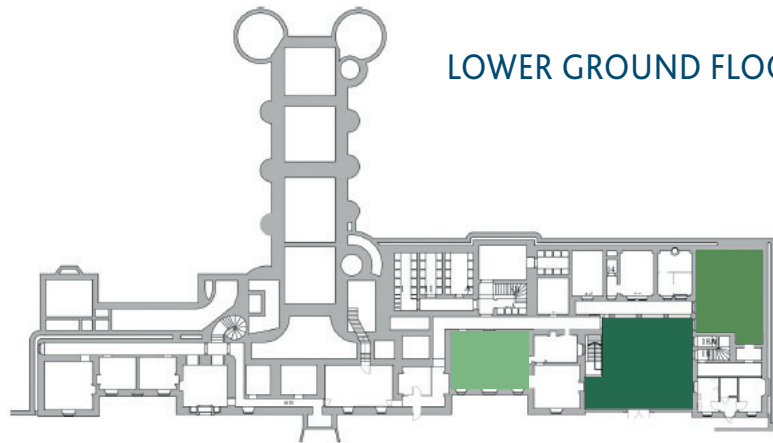
KEY	SPACE	CONFERENCE	THEATRE	DINING	RECEPTION
■	State Drawing Room	40	100	100	200
■	State Dining Room	30	80	60	100
■	Ante Drawing Room	-	-	-	40
■	Panelled Room	18	50	-	60
■	Victorian Kitchen	18	50	35	60
■	Old Servant's Hall	30	80	60	100
■	Vaulted Cellar	30	90	80	100
■	Courtyard	-	90	75	100
	Garden Marquee	-	400	300	400
	Front Lawn Marquee	-	900	900	1000+
	Parklands		100+ acres		



FIRST FLOOR



UPPER GROUND FLOOR



LOWER GROUND FLOOR

USEFUL INFORMATION

- Dating back to the 16th Century, Thirlestane Castle is one of Scotland's oldest and finest inhabited Castles
- Conveniently located 40 mins south of Edinburgh in a peaceful, rural setting
- 50 minutes from Edinburgh International Airport
- Available for exclusive use throughout the year
- Bespoke event coordination and advice
- Inspiring State Rooms for meetings or private dining
- Rustic spaces for atmospheric informal gatherings
- Extensive grounds and gardens ideal for marquees and large-scale outdoor events
- Range of activities, displays, and experiences available
- Luxury accommodation in Castle suites and estate woodland lodges
- Day delegate rates for meetings and conferences
- Complementary WiFi

WE HAVE WORKED WITH





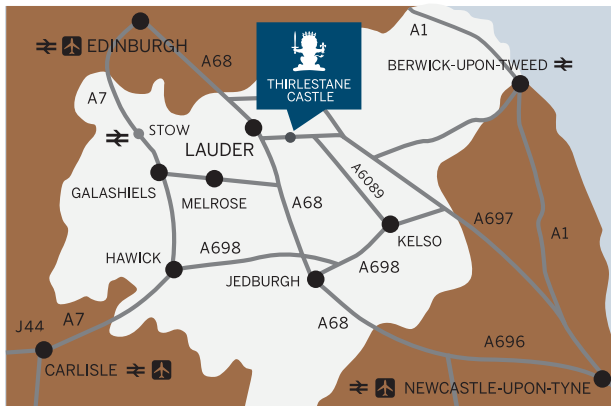
THIRLESTANE CASTLE

Lauder, Scottish Borders TD2 6RU

T: 01578 722430

E: enquiries@thirlestanecastle.co.uk

www.thirlestanecastle.co.uk



Thirlestane is very conveniently located just 27 miles south of Edinburgh city centre.

BY ROAD: Thirlestane Castle is easily accessible just off the A68 at Lauder.

BY AIR: The nearest airport is Edinburgh, which is 50 mins drive from Thirlestane Castle. Alternatively, you are welcome to arrive by helicopter.

